

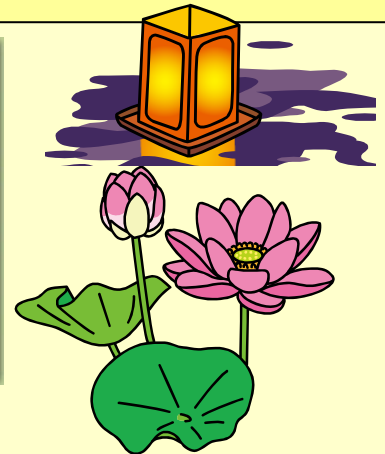
\*Please note that all events are subject to change without notice.

## Obon and Toro Nagashi

**Toro nagashi** or lantern floating is a Japanese tradition performed as part of *obon* Buddhist ritual. *Obon* is a period of respect for ancestors and those who passed away. They hurriedly come back on horseback to their homes. People send prayers and remembrances to their ancestors and those loved ones as they return to another world slowly on the back of a cow.

You will see *toro nagashi* Buddhist rituals throughout the country. You write the names of your ancestors and loved ones who have passed away on a paper lantern and put it on the river or ocean to float away. (Lanterns will be collected the following day to protect environment.) *Obon* is the 4-day period (July 13-16 in Tokyo and Aug. 13-16 the rest of the country). Besides the light (candles), incense, and flowers, other things (such as the deceased's favorite fruits, sweets, etc.) will be offered on the family altar. *Toro nagashi* is performed as part of the sending off of these spirits to their home in another world. Please note that *obon* is observed differently in different regions. Some of the typical *toro nagashi* are in Matsushima of Miyagi Prefecture, Arashiyama in Kyoto, and Hiroshima. To respect one's ancestors and send their thoughts to them by floating a paper lantern down the river, lake, etc. has been done for centuries.

In Gunma, [Shin-machi](#) of Takasaki and [Chiyoda-machi](#) of Oura-gun hold their *toro nagashi* at municipal level. It is now held [outside of Japan](#), too.



## [Takasaki Matsuri](#)

This is the biggest event of the year for the City of Takasaki. In addition to the usual procession of floats and portable shrines, a fireworks display will be held on the night of August 6. Takasaki's original designer daruma-shaped float will also join.

**When:** August 5 (Sat) & 6 (Sun)

**Where:** Downtown Takasaki (JR Takasaki West Exit – Tamachidori Ave.  
– Jikodori Ave. – Otemaedori Ave. – Sakurabashidori Ave.  
– Motenashihiroba [MAP](#))

**Contact:** 027-321-1257

## Takasaki



## [Kiryu Yagibushi Matsuri](#)

This is the biggest event of the year for the City of Kiryu. *Yagibushi* dance circles will virtually be everywhere in the city. Other *Yagibushi* dance-related events will also be offered in the City. It attracts approx. 450,000 visitors every year.

**When:** August 4 (Fri), 5 (Sat), and 6 (Sun)

**Where:** Downtown Kiryu [MAP](#)

**Contact:** 0277-46-1111

## Kiryu



## [Maebashi Fireworks Display 2017](#)

Approx. 13,000 fireworks displays of many varieties can be seen up above the Tone River near *Owataribashi* Bridge for about two hours. The 400-meter long one called the Niagara is spectacular.

**When:** August 12 (Sat) 19:00-20:45

**Where:** River bed of Tone River near Owataribashi Bridge [MAP](#)

**Contact:** 027-235-2211

## Maebashi



# Gunma Events

# August 2017

\*Please note that all events are subject to change without notice.

## [Ojima Neputa Matsuri](#)

Neputa in Gunma started in 1986. Ever since, you don't have to travel up north in Hirosaki City, Aomori Prefecture to see the gigantic Neputa's. It started here in Gunma due to a deep historical connection between the Hirosaki and Ojima areas. The Neputa procession from Ojima 1-chome on Route 142 to the Kameoka Jinja Shrine draws a huge crowd every year.

**When:** August 14 (Mon) & 15 (Tue)

**Where:** Ojima shopping streets along route 142 [MAP](#)

**Contact:** 0276-47-1833

Ota



[2017 Summer Festivals & Fireworks Displays \(August\)](#) [PDF](#)

## [“What is happening in Amazon now?”](#)

[at the Gunma Museum of Natural History](#)

Amazon is known to have the largest rainforest in the world. It stretches 780 square meters, which is 20 times as big as the Japanese archipelago. Every year, at least one new species is discovered in the Amazon. On the other hand, 20% of the rainforest had vanished forever just in the last 50 years. This means that diversity is at stake. You can see the fish, birds, reptiles, and mammals living in the Amazon at the exhibition.

**When:** Until September 3 (Sun)

**Where:** [Gunma Museum of Natural History](#)  
(1674-1 Kamikuroiwa, Tomioka) [MAP](#)

**Contact:** 0274-60-0274

Tomioka



## [Summer Adventure at Kusatsu Spa Resort](#)

Parents with elementary school-age and younger kids can certainly enjoy this event. You know how much they are fascinated by a *kabutomushi* (allomyrina dichotoma) don't you? On the premises of *michinoeki* (roadside station) in Kusatsu, many *kabutomushi*'s will be released for children to catch. No admission fees.

**When:** August 8 (Tue) Registration starts at 9:30 Program starts at 10:00

**Where:** Michinoeki Kusatsu Undo Chaya Koen  
(2-1 Kusatsu, Kusatsu-machi, Agatsuma-gun) [MAP](#)

**Contact:** 0279-88-0800

Kusatsu-machi



## [Mid-summer snow in an amusement park](#)

You can actually feel the snow falling on you on a hot summer day! This is one of [Kezoji Koen Park's](#) usual special summer treat. The amusement park is run by the City of Isesaki. No admission fee is necessary, and all rides and playground equipment are priced very low.

**When:** August 10 (Thurs) thru 15 (Tue) at 11:00, 13:00 & 15:00 hours

**Where:** Kezouji Yuenchi or Amusement Park  
(1 Kezouji-machi, Isesaki) [MAP](#)

**Contact:** 0270-24-5111

Isesaki

